



Whitefield News

FREE Thanks to our advertisers



Volume 2, Issue 11

Published Monthly

May 2015

Town updating personal property records

By Tony Marple

Towns are required under Maine State law to tax personal property for businesses; including farms. In Whitefield, the Town's personal property records are out of date, and you should by now have received a survey to update that information. Personal property includes items like skidders, computer systems, farm tractors, backhoes, switching equipment, and other items used to produce revenue. Farms growing field crops and generating less than \$10,000 in revenue are exempt from personal property taxes with the exception of their tractors or other self-propelled vehicles. Farms with revenue greater than \$10,000 and all businesses will be taxed on their personal property at the same mill rate that applies to structures and land.

To estimate your taxes, multiply the value of your personal property by .015. For example, a tractor that has a depreciated value of \$10,000 would be taxed at approximately \$150.

There are business incentives (BETR and BETE) under State law that can substantially reduce your property taxes. Details are available at: <http://www.maine.gov/revenue/propertytax/propertytaxbenefits/betr-bete.pdf>.

It is important to note that any new tax revenue generated by additional personal property taxation will be used to reduce the overall mill rate. The Town's total tax revenue; including personal property, land, and buildings is set at the amount required to fund voter-approved municipal and school expenses; along with the Lincoln County assessment.

Please complete this survey thoroughly by the May 5, 2015 deadline. The Town will audit the results to ensure completeness.

For questions, please contact the Town Office.

Certified "Happiest Baby" educator: Pat Parks

by Cheryle Joslyn

Many of us have been there. Maybe we don't even want to admit it. It was (and is) such a parent's nightmare - our beautiful new baby just cries and cries and cries! Remember these words, "colicky baby"? Doesn't that phrase make you quiver? It is estimated that "half of all new babies cry and fuss more than two hours a day - their prolonged crying often triggers exhaustion, breastfeeding failure, marital stress, maternal depression, and even child abuse". Today, Dr. Harvey Karp shares with thousands of families his clinical techniques for quickly calming fussy babies and helping them sleep longer.

The Happiest Baby is more than just a parenting course, it is a "life skill that will help improve parent bonding", and for the first time, it is available in Whitefield. It IS the "cuddle cure" for those cries!

After retiring from Maine Department of Education's Child Development Services, Pat Parks of Whitefield



wanted to continue to make a difference in her community. With her 13 years of career experience, her work with parents as they learned about their child's growth and development, her Bachelors Degree in Social Science, her own two sons grown and establishing their own lives, and her desire to teach, Pat was led to learn more about another form of service that she could provide. After learning about Dr. Harvey Karp's *Happiest Baby, Inc* parenting course, she became a certified program educator.

With her training, Pat brings to Whitefield what hundreds of other communities across the nation are offering new parents and infant/child care providers.

As a certified educator, parents and providers can be ensured of Pat's familiarity and competence with the methodologies presented in her single two-hour course. Over the past 20 years, Dr. Harvey Karp, a nationally renowned pediatrician and child development specialist, has taught working **Continued on Pg. 2**

RSU 12 Budget Information for Fiscal Year 2015-2016

by Howard Tuttle (RSU 12 Superintendent)

The RSU 12 Board of Directors is pleased to present to you the fiscal year 2016 budget. Board budget goals and priorities include upgrading facilities and improving energy efficiency, expanding Pre-K offerings to more students, improving technology infrastructure, providing quality programming and quality training, and maintaining reasonable classes. The RSU 12 Board of Directors is presenting a fiscal year 2016 expenditure budget increase of 2.90% when compared to the fiscal year 2015 budget. State and federal subsidies and other revenues are less than anticipated causing a total local increase of 3.34% to local towns.

The cost sharing formula approved by RSU 12 citizens in 2012 continues to be phased in resulting in differences in contribution by town. The increase is not shared evenly by each town, because the cost to a town is based on several factors including the "historical" cost-sharing formula, the "new" cost-sharing formula (which is based on the percentage of the RSU 12 student body that lives in the given town), a Safety Net (that is helping the towns transition to the "new" formula), and a town's number of "subsidizable" students, as listed on the State funding formula worksheet, the ED 279. The interplay of these factors causes the individual RSU 12 towns to be affected differently, as shown in the table - which shows the local contribution that each town will be responsible for in the 2015-2016 school year if the voters in RSU 12 towns also approve the budget approved by the RSU 12 School Board on April 9th.

The RSU 12 budget continues to place an emphasis on staff and programs that contribute positively to the education of our students. More details about the budget can be found on the RSU 12 website - www.svrsu.org. There you will find the budget development timeline, the total detailed budget, and a budget overview presentation by the Superintendent. There is also a place where you can ask questions about the budget and the Superintendent will answer them. It is the RSU 12 Board's hope that you will find this to be a school budget you can support and that you do support it by coming to the District Budget Meeting on Tuesday, May 19 at Chelsea Elementary School at 6:30 PM, and by voting on June 9th. **See Chart on Page 4**

Parks from Pg. 1 moms to superstars like Madonna this innovative approach to baby calming, authored the highly acclaimed, best selling book and DVD, *The Happiest Baby on the Block*, and designed a certification program for educators. Pat offers Dr. Harvey's treasure -the calming reflex (the virtual off-switch for a baby's crying) in the two hour session as well as the excellent resource book and video.

Parents will learn:

- Why the idea that colic is due to gas pains is an old wives tale.
- Why keeping the house quiet is often upsetting to newborns.
- Why most babies get more upset in the evening.
- Why it's impossible to spoil young babies.
- An easy way to help infants sleep a few hours more at night.
- Why fathers are often the best baby "calmers" in the family.

As a *Happiest Baby* educator, Pat will share Dr. Karp's 5 S's: the five simple techniques that activate the calming reflex (swaddling, side/stomach, shhhing, swinging, and sucking) and she will "give new moms as well as dads (as well as other family members and childcare providers) the tools they need to help infants sleep longer and calm unhappy babies almost as easily as...turning off a light". If you are an expectant parent, already a parent with a newborn, grandparent, relative or friend of a new parent, babysitter, or child care provider and you would like to know more about this innovative, successful program, you are urged to contact Pat at 549-7191 for more information. She is anxious to share with you the techniques for calming crying babies. Remember, we don't always know what to do from the very beginning, we sometimes have to learn, so give Pat a call and she'll be glad to help you.

Arlington Grange is celebrating 100 years as a Grange in Whitefield

By Debbie Rogers

On June 7th, from 1-4 pm, we will be celebrating this milestone with an open house and farming appreciation day. The open house will include refreshments, tours of the grange, and a history of our grange and the building. We will also have tables available for any farmers who wish to market their products, converse with the attendees and celebrate the rich agricultural history of Whitefield, the Grange, and its farming community.



MOFGA will be attending as our guest and also Taryn and Ben Marcus from Sheepscoot General.

In 1884 the members of Erskine Post #24 G.A.R. (Grand Army of the Republic) undertook the project of raising funds for the hall to be used as a public library, free high school, and event center. On September 1st, 1914, the Arlington Grange first assembled there with 27 members, including Fred Arlington Naray, who was instrumental in organizing the Grange, and it was for him the Arlington Grange was named.

We hope you will join us in the first of several events we will have this anniversary year.

Please contact Debbie Rogers for any questions at 549-3491 or email windsweptcreations@myfairpoint.net

Kieve Experience

By Kit Pfeiffer

Need a recipe for a life-changing experience for Whitefield sixth-graders? Put all 21 eager classmates and their duffels on a bus to Camp Kieve in Nobleboro on a Monday morning, lead them through the diverse curriculum of cooperative games, group problem-solving activities, adventure-



Whitefield 6th graders team up for a cooperative game of balance Photo by Kit Pfeiffer

based challenges such as the climbing wall and the maze, encourage them with energetic and talented Kieve counselors and faculty, feed them well (of course!), and return them to their families Friday afternoon, tired, yet full of new-found confidence in themselves and their friends. It's called the Leadership School at Kieve, and it's exactly what Whitefield School's 6th graders did the week of April 6-10.

The mission of the Leadership School, now in its 34th year, is to challenge students, teachers, and parents to take positive risks, set meaningful goals, and make healthy decisions, all while being supportive team members and strong leaders. Throughout the week, course classes cover communication skills, healthy relationships, solo reflection, decision-making, team-building and adventure.

Also at Kieve the same week were students from Bucksport Middle School and the island schools of Vinalhaven, North Haven and Islesboro. It was a dynamic mix and gave Whitefield students a chance to see what kids their age are like from other parts of Maine. "I liked hanging out with my friends and making new ones," commented Saydi.

What did other students think was the most challenging experience of the week? Around the lunch table, Devan said, "Rock-climbing, and the challenge of getting to the top." Abby agreed. "I liked the indoor climbing wall the best. I'm afraid of heights, but I finally made it to the top of the wall and rang the bell. Everyone cheered!" Dominic, Johnathan and Dylan all liked the cooperative games. Said Dylan, "We had to restart a few times, but together we figured it out." Then Isabella summed up the week this way: "It's a really good experience. You learn to use leadership skills, and it's fun."

Whitefield 6th graders have been attending the Kieve program for several decades, with funding coming from the district and special grant programs such as Safe and Drug-Free Schools. This year, without any grant funding, it took a special fundraiser by the sixth graders and several generous donors in town to come up with the cost. Anyone interested in helping to continue this valuable program for next year's 6th graders should contact principal Josh McNaughton at the Whitefield Elementary School.

SHEEPSCOOT GENERAL
at Uncas Farms

LOCAL GOODS-FARM-CAFE
Hours Tues - Sat 7 AM to 6 PM Open for Breakfast
98 Townhouse Rd, Whitefield ME 04353
207.549.5185 - sheepscootgeneral@gmail.com
www.sheepscootgeneral.com

STILLPOINT ACUPUNCTURE

Cassandra Walters
Dipl. O.M., LMT

Nilsen Lane
Whitefield, ME 04353
Stillpoint5element.com

207 596 3978
ckwalters66@gmail.com

Whitefield Historical Society "Just Yesterday"



Photo taken circa 1915 - Courtesy of the Eleanor & Eric Westbye Collection

This picture shows the so called "Mill House" that sits on the dam at the head of Clary Lake. Behind and to the left of the mill house are the drying sheds where lumber was stored as it dried. Just beyond the mill house building you can see the entryway to a building. It has a sign hanging over the door which read Fred Benson Blacksmith Shop.

On the right side of the road is the house where Albert Boynton lives today and where he was raised after being born in the Mill House. Beside the barn was the ice house. Just beyond his house is what is often called the Mable Brown House. Over the years a lot of different people and families lived there and there was not a particular name attached to it.

I want to thank Albert Boynton for assisting me with this information.

Submitted by Jane Chase

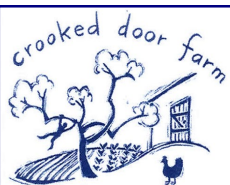
School speech contest helps students develop skills

Contributed by Whitefield School

Whitefield Elementary students recently gained the opportunity to demonstrate their public speaking skills and take pride in personal accomplishments. On April 16, students took part in a speech contest sponsored by Modern Woodman of America, a fraternal financial services organization.

Students competing in the contest shared their presentations on this year's topic, "An Interesting Landmark".

The winners of this year's speech contest were Simon McCormick in first place, with the topic "The Lincoln Memorial", second place was Milo Lani-Caputo ("Machu Picchu"), and Colby Northrup was in third place ("Yellowstone National Park"). Each of them received a trophy and a gold award pin, and their names will be engraved on the school's speech contest plaque. They will be competing in the district contest at a future date. Gold award pins were also given to the next six ranking finalist: Arianna Coulliards, John Cook, Dominic Smith, Alexia Mathews, Johnathan Blair, and Everett Blair. All participants received certificates of participation for the hard work they did writing about their chosen topic and delivery of their speech.



Organic veggies and eggs

205 Gardiner Road
Whitefield, ME 04353
207-299-3972; 207-385-7451
crookeddoorfarm@gmail.com

www.crookeddoorfarm.com

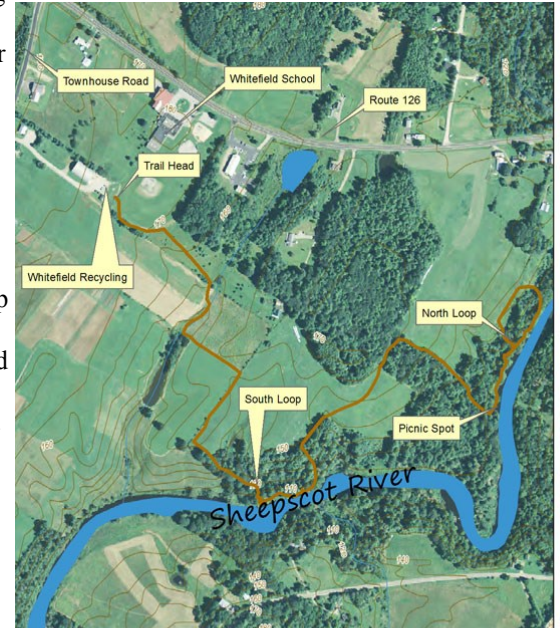
Community celebration of the new Happy Farm River Trail set for May 28

by Kit Pfeiffer

With the return of the good weather, there will be a community celebration of the new Happy Farm River Trail on Thursday, May 28 at 12:30 PM at the trailhead at the Recycling Center. (rain date is June 4.) The event is part of the Whitefield School's annual Day of Caring. In the morning, groups of students will be helping out various groups all over town with worthy projects. The Whitefield Trails Committee will get help with spring clean up of their trails.

Students and teachers from the Whitefield School will walk over and participate in the community celebration of the Happy Farm River Trail and will sing a special version of Pete Seeger's "This

Land Is Your Land". The new trail is expected to be a valuable resource for outdoor education and recreational use by the school.



Legend

Happy Farm River Trail
To the River: 0.7 miles
To the Picnic Area: 1.3 miles
Round Trip: 3.1 miles



State of Maine aerial orthophotos provided by the State of Maine, Maine Office of GIS and Maine Geospatial Board Text, NAIP 2013



Map prepared by: S Patton
Sheepscot Valley Conservation Association



Mark Fenderson at the Sugar Shack Photo by Tony Marple

Karass Financial & Accounting Licensed to Practice before the IRS

Edward Karass, MBA
Enrolled Agent
737 Townhouse Road
Whitefield, Maine 04353
Tel: 207-549-7182
Cell: 207-441-9498
Email: karassfinancial@gmail.com

ek

Excellence in Customer Service

MAY 2015 COMMUNITY EVENTS CALENDAR

- 1st **Whitefield Food Pantry**, St. Denis Hall, 1-3 pm
- 4th **Coopers Mills Fire Dept.**, All are welcome. No obligation. 7 pm
Kings Mills Fire Dept., 7 pm
- 5th **Select Board**, Fire Station, 6 pm
Laughing Yoga with Karen Stultz Join us and discover the fast and easy way to reduce stress, and have fun doing it. 6:30 pm
Kings Mills Union Hall Board Meeting, Public welcome, 7 pm
- 6th **Trail Run Training Series**, Hidden Valley Nature Center 5-6pm
Whitefield Historical Society, 6:30 pm
- 7th **Senior Men's Group**, Sheepscot General, 10 am
- 10th **Whitefield Athletic Association (WAA)**, Whitefield School, 6 pm
- 11th **Whitefield Municipal Fire Dept.**, Fire Station, 7 pm
- 12th **Women of Whitefield**, Sheepscot General, 10 am
Select Board, Fire Station, 6 pm
- 13th **Trail Run Training Series**, Hidden Valley Nature Center 5-6pm
Arlington Grange: 6 pm Pot Luck Supper, 7 pm Meeting All are welcome.
- 14th **Senior Men's Group**, Sheepscot General, 10 am
RSU School Board Meeting, Chelsea School, 6:30-9 pm
- 15th **Open-Mic Night**, Sheepscot General, 7-9 pm
- 16th **DRUMMING CIRCLE**, Sheepscot General, 6:30 pm, Open to the public, all ages welcome
- 19th **Select Board**, Fire Station, 6 pm
District Budget Meeting at Chelsea Elementary School at 6:30 PM
- 20th **Trail Run Training Series**, Hidden Valley Nature Center 5-6pm
Planning Board, Fire Station, 6-8 pm
- 21st **Senior Men's Group**, Sheepscot General, 10 am
- 26th **Women of Whitefield**, Sheepscot General, 10 am
Select Board, Fire Station, 6 pm
- 27th **Trail Run Training Series**, Hidden Valley Nature Center 5-6pm
Arlington Grange, 6 pm Pot Luck Supper, 7 pm Meeting All are welcome.
- 28rd **Senior Men's Group**, Sheepscot General, 10 am
Happy Farm River Trail Community celebration Recycling Center, 12:30 pm
- 30th **Ham & Baked Bean Supper**, Kings Mills Union Hall, 5-7 pm

*Do you have an event? Contact whitefieldtownnews@gmail.com
 We'll add you to the town calendar website and newsletter.*

RSU 12 Budget Information for Fiscal Year 2015-2016

TOWN	2014-2015 LOCAL CONTRIBUTION	2015-2016 (proposed) LOCAL CONTRIBUTION with Safety Net applied	Change in LOCAL CONTRIBUTION from 2014-15	Percent Change from 2014-15
Alna	\$ 898,625	\$ 894,679	\$ (3,946)	-0.44%
Chelsea	\$ 1,968,607	\$ 2,017,017	\$ 48,410	2.46%
Palermo	\$ 1,643,085	\$ 1,774,525	\$ 131,439	8.00%
Somerville	\$ 474,356	\$ 527,669	\$ 53,313	11.24%
Westport Island	\$ 1,012,040	\$ 867,952	\$ (144,088)	-14.24%
Whitefield	\$ 2,063,070	\$ 2,113,559	\$ 50,489	2.45%
Windsor	\$ 1,874,138	\$ 2,070,776	\$ 196,639	10.49%
TOTALS	\$ 9,933,920	\$ 10,266,177	\$ 332,256	3.34%

AP ALBISON'S PRINTING
 Quality Printing Since 1932
 Offset & Digital Printing
www.albisonsprinting.com
 124 Riverside Drive, Augusta 622-1941

Whitefield Trash Service
 Dana Rogers
 549-3491
 Household Garbage Pickup - \$2.00 per bag
 Tire Disposal \$3 per tire - Large Tires \$5
 FREE Metal removal, appliances (no Freon) wood Stoves,
 Auto & lawnmower batteries - ANY METAL WASTE
 Estimates available for cleanout of basement, garage, house,
 yard or sheds.


207-549-7921
 open 7 days a week

North Whitefield Superette
 Since 1976
 Pizza, Sandwiches and Groceries

Country Corner's Store
 549-3135

 Mon-Fri 5:30 AM - 9 PM
 Sat 6:30 AM - 9 PM
 Sun 7:30 AM - 9 PM
 Gas, Groceries, Deli, Pizzas, Sandwiches,
 Meats and MORE!

Hardware Sporting Goods Feed & Grain
Hussey's General Store
 MAIN'S LARGEST
 Guns, Wedding Gowns, Cold Beer
 Corner Route 32 & 105 Windsor, Maine 04363
 Open: M-S 7 AM- PM SUN 8 AM-5 PM
 Email: info@husseysgeneralstore.com www.husseysgeneralstore.com
 Fax: 207-445-3750 Tel: 207-445-2511
 "IF YOU CAN'T FIND IT AT HUSSEY'S, YOU DON'T NEED IT"

 **ELMER'S BARN & Antique Mall**
 45 Dealers and growing!
 Come check us out; new treasures weekly!
 Rt. 17, Coopers Mills, ME 107 Rockland Rd., Whitefield (207) 549-7671
Something for everyone!
 Tools, Furniture, Coins, Glass, Jewelry, Collectibles
 Open year 'round
 Summer hours 9-5ish
 Winter hours 9-4ish


Whitefield Country Preschool
 Serving the area's 3 - 5 year olds since 1981
 1 - 5 days of instruction per week Sept. - May
 Register year round
 For information, please call
 Joan Kierstead - 549-5019

Deadline for newsletter submissions is the 15th of the month. Email whitefieldtownnews@gmail.com